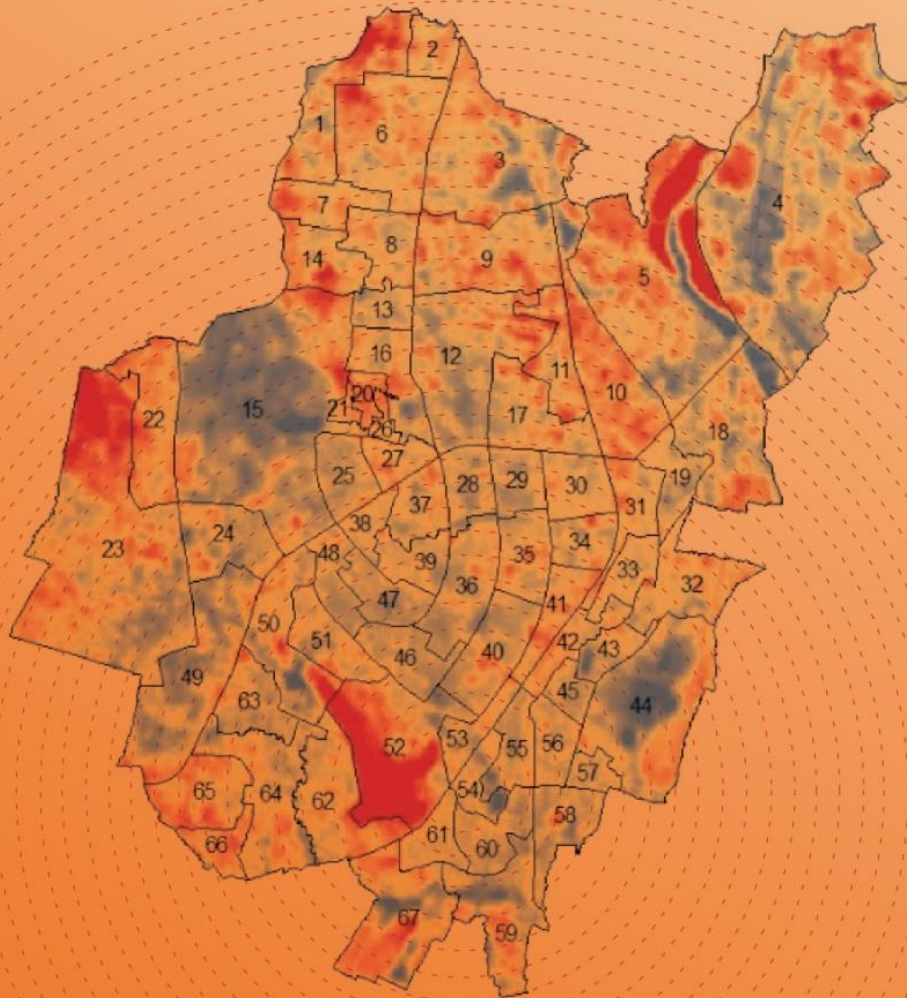


HEAT WAVE ACTION PLAN BHUBANESWAR CITY



Heat Wave Action Plan- Bhubaneswar City

Prepared by:

Integrated Research and Action for Development



Supported by:

International Development Research Centre, Government of Canada (IDRC)



Canada

© 2020 Integrated Research and Action for Development (IRADe)

‘Heat Wave Action Plan- Bhubaneswar City’

Supported by: International Development Research Centre, Government of Canada (IDRC)



INDIAN
INSTITUTE OF
PUBLIC HEALTH
GANDHINAGAR



Canada



Disclaimer

All rights reserved. No part of this publication may be reproduced or transmitted in any form or by any means, electronic or mechanical, including photocopy, recording or any information storage and retrieval system, without permission in writing from IRADe. The presentation of material in this publication and in maps which appear herein does not imply the expression of any opinion on the part of IRADe concerning the legal status of any country, state or city or the delineation of their frontiers or boundaries.

Contents

1. City Profile - Bhubaneswar.....	5
1.1 Demography.....	5
1.2 Urbanization.....	6
1.3 Hazard Vulnerability.....	7
2. Heat Waves and Need for Heat Action Plan	8
2.1 Heat Waves	8
2.2 Odisha State and Bhubaneswar City Scenario	9
2.3 Impacts of Heat Wave.....	10
2.4 Need for Climate Adaptive action plan in Bhubaneswar.....	11
3. Climate Adaptive Heat Action Plan for Bhubaneswar	13
3.1 Introduction	13
3.2 Climate change in Bhubaneswar	13
3.3 Thermal Hotspot Maps for Bhubaneswar	16
3.3 Identification of Ward- level vulnerability- Bhubaneswar	17
3.4 Impact on Health and Livelihood	18
5.5 Wage and Productivity Loss due to Heat Stress.....	20
4. Mapping of Heat Hotspots.....	22
4.1 Ward level Thermal Heat Spots	22
4.2 Identification of Urban Heat Islands	24
5. Vulnerability Mapping.....	25
5.1 Vulnerable Areas.....	25
5.2 Vulnerable Group Mapping	26
5.3 Ward Level Vulnerability zones	27
6. Heat Action Plan — Strategy, Roles and Responsibilities	29
6.1 Strategy and Components of Heat Action Plan	30
6.2 Medical emergency preparedness.....	31
7. Adaptation and Mitigation Measures	35
7.1 Short and Medium Term Measures.....	35
7.2 Long term Measures	36
7.3 Heat Wave Advisory.....	37
DOS AND DON'TS FOR DURING HEAT WAVES.....	37
8. Implementation of HAP	39
8.1 Roles and Responsibilities in Phase 1 (Pre-Heat Season January through March)	40

8.2 Roles and Responsibilities in Phase 2 (During the Heat Season March through July)	41
8.3 Roles and Responsibilities During Phase 3 (Post-Heat Season July through September) .	45
Conclusion.....	52
References	52
ANNEXURES	54
Annexure 1 – Heat Advisory Issued by the Government of Odisha	55
SATARK Web & Mobile App (IMD and OSDMA)	59
Annexure 2 – Climatology Profile of Bhubaneswar	61
Annexure 3 - Impact of Heat Stress on Health, Livelihood and Productivity.....	72
Annexure 4 – Overall City Level Impact of Heat Stress	92

List of Figures

Figure 1: Bhubaneswar City location Map.....	5
Figure 2 - Criteria for Heatwave in Plains, Coastal and Hilly Regions	8
Figure 3-Annual mean land surface air temperatures anomalies 1901- 2018. IMD, 2019	9
Figure 4-Heat Wave Conditions in Summer season (1990-2018), Bhubaneswar. Source: IMD	10
Figure 5- Variation of Monthly Mean Maximum Temperature in Bhubaneswar for Summer Season 2008-2018	14
Figure 6- Variation of Monthly Mean Minimum Temperature in Bhubaneswar for Summer Season 2008-2018	15
Figure 7- Variation of Monthly Mean Relative Humidity 1730 in Bhubaneswar for Summer Season 2008-2018	16
Figure 8-GIS Methodology for identification of vulnerable heat hotspots	23
Figure 9-Heat Advisory Issued by Bhubaneswar Municipal Corporation	39
Figure 10-Institutional Mechanism for Heat Wave Management, OSDMA	51

List of Tables

Table 1: Demography Trend (1981-2011).....	5
Table 2- Bhubaneswar Urban Agglomeration	6
Table 3-Heat Wave Mortality Records.....	11
Table 4-Heat Alerts for by NDMA	12
Table 5-thresholds are set for different cities during the summer months	12
Table 6-Advisory Threshold for Bhubaneswar by NDMA	13
Table 7- Maximum and Minimum Temperatures, Average Mean, and Deviation from Mean for the City of Bhubaneswar between 2001-2017	14
Table 8-- RH 830, RH1730, Average Mean, and Deviation from Mean for the City of Bhubaneswar between 2001-2017	15

1. City Profile - Bhubaneswar

Bhubaneswar city is the largest city and capital of Odisha and located on the east coast of the Indian peninsula. Bhubaneswar is categorized as a Tier-2 city. An emerging information technology (IT) and education hub, Bhubaneswar is one of the country's fastest-developing cities.

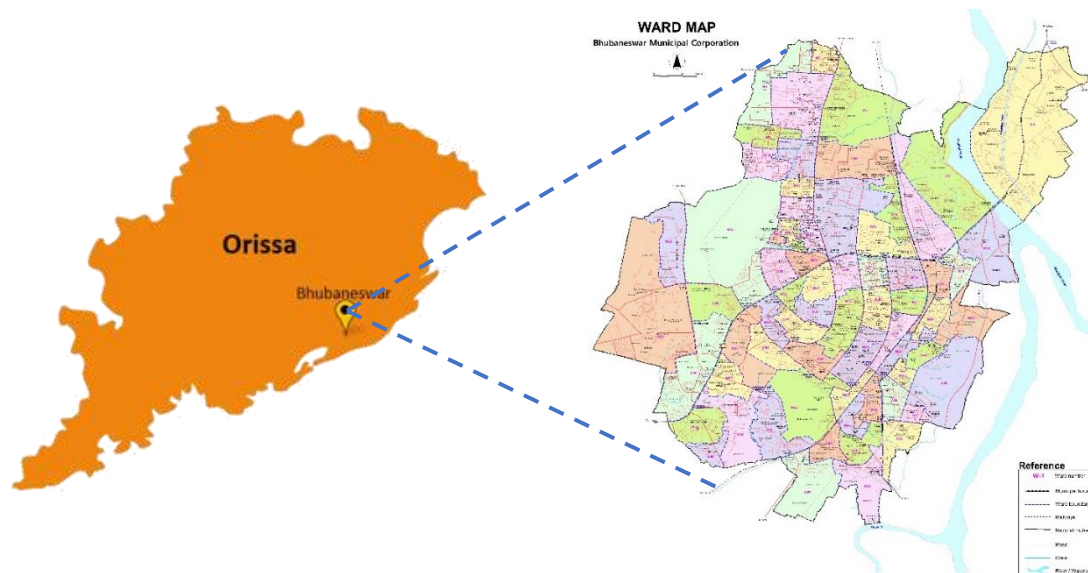


Figure 1: Bhubaneswar City location Map

Classification of the City	
Location	85°44' E to 85°44' 'E longitude and 20° 12' to 20°25' N latitudes
Height above main sea Level	45 m above Mean Sea Level (MSL)
Total area (sq. km)	135 sq.Km (Census, 2011)

1.1 Demography

Bhubaneswar, has a population of about 8,40,834 with a population density of 6,228 per sq km (Census, 2011). Due to increase in employment opportunities and migration, population growth has increased.

Table 1: Demography Trend (1981-2011)